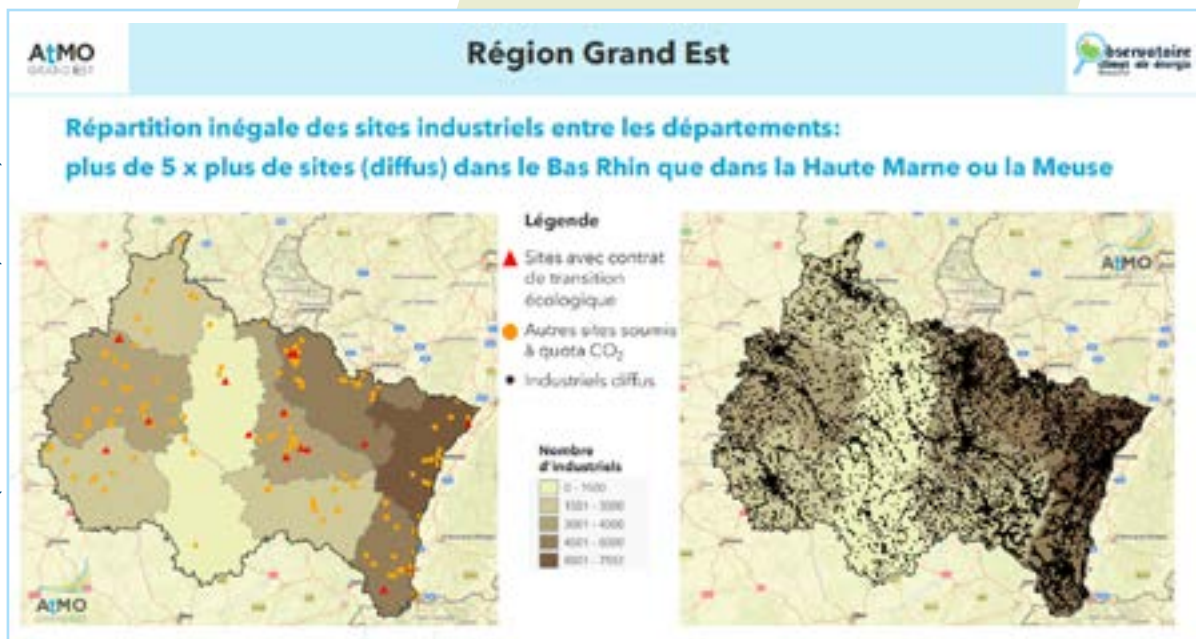


The "GHG Inventory": Greenhouse gas emissions report

ATMO Grand Est (source : Grand Est industry fact sheet).



Definition and purpose of the GHG Inventory

The purpose of a GHG Inventory is to **quantify the total volume of greenhouse gases (GHGs) emitted (or captured) into the atmosphere** over a year by the activities of a **legal entity (public or private organization)** within the national territory, expressed in carbon dioxide equivalents.

The GHG Inventory is part of a legislative framework designed to **enable France to achieve its ambitious targets** for reducing GHG emissions in order to combat climate change.

The GHG Inventory must be published online on the ADEME national platform (*French national agency for the environment and rational energy use*) to make the information public, and the data must be updated **every four years for private sector structures**.

Reference framework and obligations

The legislative provisions relating to greenhouse gas emissions reports are set out in Article L. 229-25 of the Environment Code. Articles R. 229-45 to R. 229-50-1 specify the terms and conditions for applying the system. These regulatory articles were amended by Decree No. 2022-982 of July 1, 2022.

The GHG Inventory has been mandatory since July 12, 2020, for companies with more than 500 employees (250 in overseas territories) under the National Commitment to the Environment Act.



© Anne-Christine Le Gall

Implementation of the GHG Inventory

An organisation can be assisted in the implementation of its GHG Inventory by organizations specializing in ecological transition and carbon accounting, which can offer support ranging from data collection to the creation of a transition plan.

ATMO Grand Est has been assisting local authorities with the implementation of their GHG Inventory for several years, including the European Community of Alsace, Mulhouse Alsace Agglomération, and Colmar Agglomération. It has also had the opportunity to assist Euroairport Basel-Mulhouse and the French Federation of Aerostation (FFA).

To date, several industrial sites in Alsace have completed their GHG Inventory, including the Pierre Schmidt Group (food), TRYBA (manufacture of plastic components for construction), Alsachimie and Constellium Neuf-Brisach (metallurgy). All the results of these organisations' GHG Inventory assessments and their associated action plans can be found on the ADEME online platform: <https://bilans-ges.ademe.fr/bilans>

- Assessing one's carbon footprint by completing a BEGES assessment enables organisations to commit to an ecological transition, identify risks within their region, and take action against global warming.



© Anne-Christine Le Gall

Structure of the GHG Inventory

The emissions from the structure studied are divided into three categories known as "SCOPE" (see diagram below) and are organised according to predefined categories called "items" (heating of buildings, transportation, purchases of goods and services, remote work, etc.).

- The development of a BEGES for an organisation takes into account all of its activities, ranging from building energy consumption to visitor travel.



The 6 main steps in creating the GHG Inventory

1 • FRAMING

Support in identifying and defining the organisational scope: this consists of all the equipment and facilities controlled by the organisation carrying out its GHG Inventory.

2 • IDENTIFICATION OF SOURCES AND EMISSIONS

Identification of the operational scope, which consists of all GHG emissions related to operations, broken down by category and emission item: including direct emissions (SCOPE 1) and indirect emissions (SCOPE 2 and 3) resulting from operations and activities.



3 • DATA COLLECTION

Supporting management in the data collection and monitoring phase to consolidate the data utilisation phase.

4 • EVALUATION AND ANALYSIS

Calculation of baseline GHG emissions, detailed presentation of emission sources, and analysis of outsourced services/sources (detailed report).



5 • TRANSITION PLAN / ACTION PROGRAMME

Identification of the main areas for reducing CO₂ emissions and targeting the main levers to be studied.

6 • PUBLICATION ON THE ADEME NATIONAL PLATFORM

Publication of data on the French national platform: <https://bilans-ges.ademe.fr/>



© ACLG

What next?

The assessment can then be used to develop transition plans aimed at reducing the environmental impact of the organisation in question. The organisation will be able to implement a number of measures:

- Optimise the structural process
- Integrate an environmental strategy
- Commit to a CSR (Corporate Social Responsibility) approach
- Involve departments in raising awareness of climate change issues

/ CLIMATE CHANGE MITIGATION /



Available on the Observatory's website
> observatoire.atmo-grandest.eu



Other resources on climate-air-energy and industry:

- **Sectoral Atlas of the Atmosphere:**
https://lc.cx/atlas_sectoriel

FACT SHEETS also available on the Observatory's website

- **Industry fact sheets for the Grand Est region:**
https://lc.cx/industrie_grand_est

- **Haut-Rhin industry fact sheet:**
https://lc.cx/industrie_haut_rhin

- **Bas-Rhin industry fact sheet:**
https://lc.cx/industrie_bas_rhin

- **Atmo Grand Est brochure for manufacturer:**
https://lc.cx/atmo_pour_les_industriels

- **Method for conducting greenhouse gas emissions inventories (ADEME):**
https://lc.cx/methode_beges



TESTIMONIAL FROM:

Jérémy Unternahrer

- Environmental Officer at EuroAirport Basel-Mulhouse

Completing our GHG Inventory goes far beyond a mere regulatory obligation: it has become a genuine management tool for Basel-Mulhouse Airport. The airport's carbon footprint is updated annually to continuously monitor changes in emissions linked to our activities, identify our main areas of impact, and prioritise effective and measurable actions. The GHG Inventory provides a basis for placing the direct emissions from our infrastructure on a low-carbon trajectory. Furthermore, the analysis of indirect emissions (Scope 3) gives us a comprehensive view of the airport's carbon footprint and enables us to define a larger-scale action plan.



KEY FIGURE:

They did it! 17 organisations in Alsace submitted their BEGES in 2024!

Partenaires cofinanceurs / Kofinanzierende Partner



«Dépasser les frontières, projet après projet» / „Der Oberrhein wächst zusammen, mit jedem Projekt“